



Butler, GA. - +/-660 Acres:  
Taylor County - Georgia Highway 137



## **Taylor County - GA Highway 137**

Location: Georgia Highway 137, Butler, GA 31066 – Taylor County

+/- 660 acres of quality timberland with frontage on GA Highway 137 and two well maintained county roads. Nearly 600 acres of the tract is in productive uplands.

5 miles southwest of Butler, GA

54 miles east of Columbus, GA

52 miles west of Macon, GA

Timber types with acreage estimates are shown below:

2007 Natural Pine/Hardwood-2.74 acres

2023 Loblolly-197.09 acres

2022 Loblolly-96.21 acres

2008 Loblolly-231.91 acres

Utility ROW-3.23 acres

Natural Pine/Hardwood-49.62 acres

2006 Loblolly-52.95 acres

Road-3.41 acres

Sand Pine- 19.8 acres

**Price: \$2,500,000**

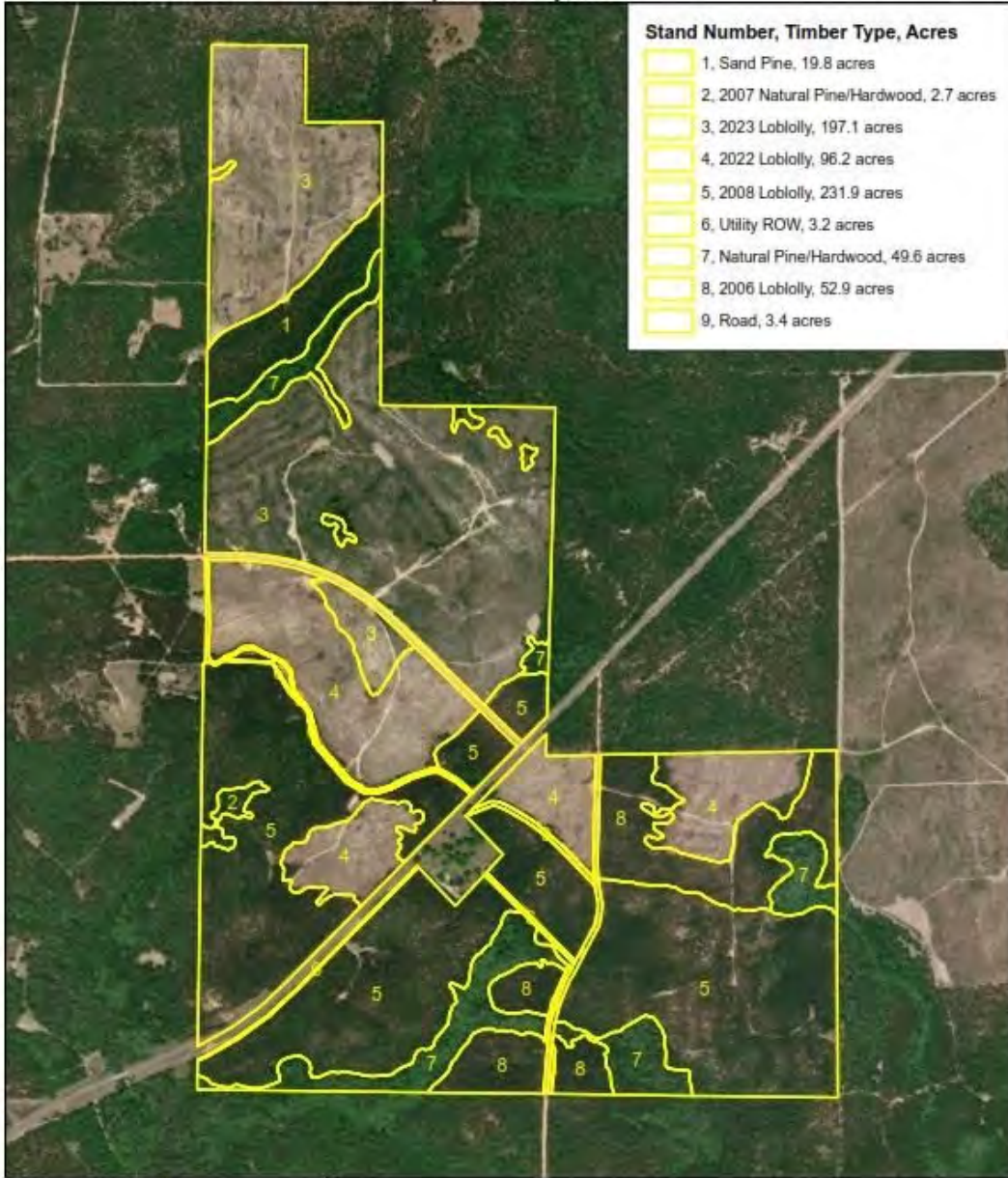


# SIZEMORE & SIZEMORE

— estd. 1949 —



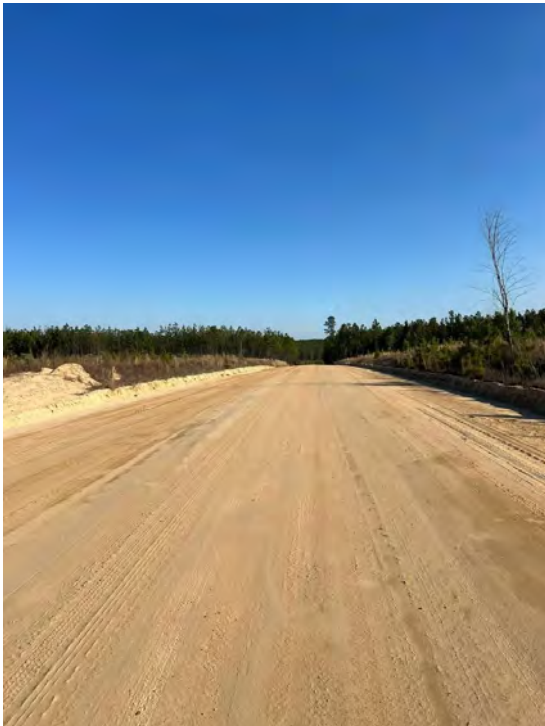
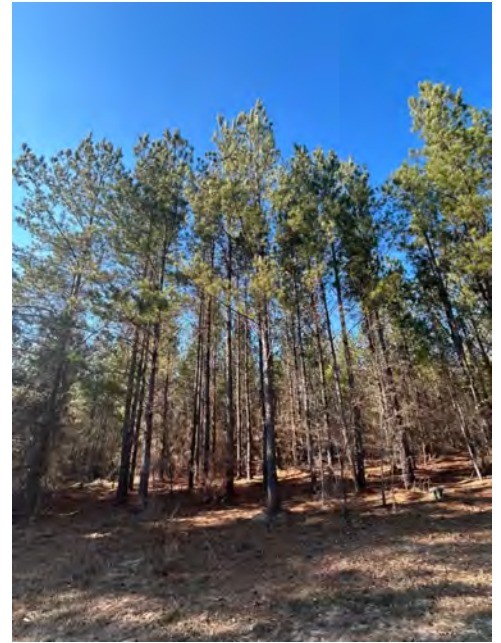
**Asterisk V LLC  
+/- 660 Acres  
Taylor County, GA**





# SIZEMORE & SIZEMORE

— estd. 1949 —





SIZEMORE & SIZEMORE  
— estd. 1949 —





## Interested in this property?

**Contact:**

Michael Heatherly  
Sizemore & Sizemore, Inc.  
Tallassee, AL

(256) 338-4718  
[sizemoretimber.com](http://sizemoretimber.com)